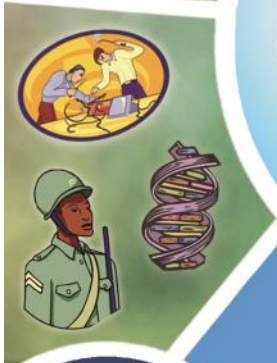


Discover

Aptitude Testing & Guidance

Yourself Your Career Path

- Your Aptitudes
- Your Personality
- Your Strengths
- Careers
- Best Colleges



- X
- XII
- Graduates

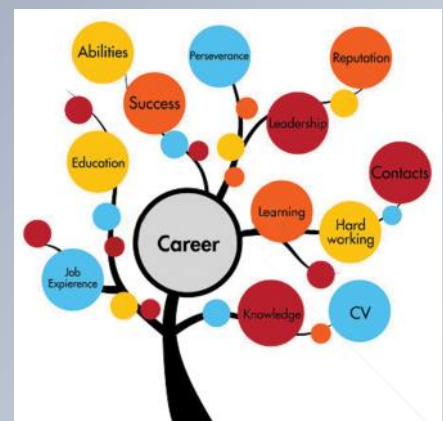
CAREER TALK

What are Career Options after X and XII

This session includes detailed information about various career options, their entry routes, eligibility, duration, specializations etc.

Topics are covered as follows:

- ◆ Options after SSC
- ◆ Options after HSC
- ◆ Options in Science
- ◆ Options in Commerce
- ◆ Options in Arts
- ◆ Non stream specific options
- ◆ Entrance exams after HSC



Target Group

Students from std. IX and X. and parents

Batch Size

20-100 Students.

Duration

2 hours.

The session consists of 1.5 hour of information dispensation, followed by 30 minutes of Q&A, where the students/parents queries are answered by the psychologist.

Professional Charges

Rs. 3000/-. Stationery and TA at actuals. * Service Tax will be applicable

DISCOVER..

Dreams,
Aspirations,
&
Potential
Unlimited!



Aptitude Testing & Career Guidance Program For Students (IX-XII)

Aptitude Tests are designed to see how you would cope to different subjects, to identify your preferred learning style, your abilities profile, and your potential. .

Career Assessments

- Aptitude Tests
- Personality Test
- IQ Test
- Learning Styles
- Interest Test
- Career Information
- Counseling

“ Choose a job you love and you will never have to work a day of your life ! - Confucius . ”

Aptitude tests assess a range of mental abilities that you use almost every day. There are several different tests, which uniquely identify your aptitudes and abilities: numerical ability, mechanical ability, reasoning ability, spatial ability, verbal ability and so forth.

Register now
dishacenter@gmail.com



DISHA
Child, Adolescent & Adult Counseling Center

Career Guidance & Counseling

C/O Domex, Kanchan Villa Bldg
KSA Compound , Bhavani Shankar
Road , Dadar , Mumbai
www.dishaforum.com
24384575/9819478538

DURATION: 4 –6hours for the entire Test Battery.

REPORT & CAREER COUNSELING:

Taking the results into account, we chart a profile that is representative of the student's aptitudes, interests, and personality.

About the Report:

The computerized report consists of a tabular representation of the student's standing on the aptitudes, an explanation of the student's performance, personality assessments, as well as recommendations and suggestions relating to suitable career options. The report will be accompanied by a personal counseling session with the vocational psychologist.

What after an Aptitude Test?

We score, analyze, and interpret the tests to determine your profile. Armed with all this information we talk in depth about your hopes and aspirations. On completion of each aptitude assessment, you will be given a detailed career guidance report and a description of careers, which are suitable to your aptitude abilities, personality profile and your intelligence. We also provide one-to-one counseling and guidance session adapted to your individual needs. The counseling and guidance sessions are accompanied by a parent.

OUR ACHIEVEMENTS

So far, we have conducted aptitude tests on over 30,000 students across various schools in Mumbai as well as outside Mumbai. Some of the prestigious schools and organisations with whom we have conducted aptitude testing are:

Our clients

- Bhaktivedanta School, Juhu
- Paranjape School, Andheri
- Parle Tilak Vidyalaya, Vile Parle
- Modern English High School, Dadar
- Jindal Steel Works (JSW), Vasind
- L & T, Andheri
- PepsiCo India, Deonar
- Amravati Engineering College, Amravati
- Kasegaon Education Society, Karad
- Valia College, Andheri
- Swabhiman Trust, Mumbai
- Ma Foundation, Vapi
- Reliance Energy, Mumbai
- Kilbil School, Pune
- Indofil Chemicals, Mumbai
- Mahindra Academy, Malad
- Prime Academy, Marol



Our Charges

No. of Students	Charges
Less than 50	Rs 750/- per student +TA + stationary expenses
51-100 students	Rs.650/- per student +TA + stationary expenses
101-500 students	Rs.550/- per student + TA + stationary expenses
501-1000 students.	Rs. 350/- per student +TA + stationary expenses

